

OR  
WITHOUT INPUT  
HARMONIC FILTER

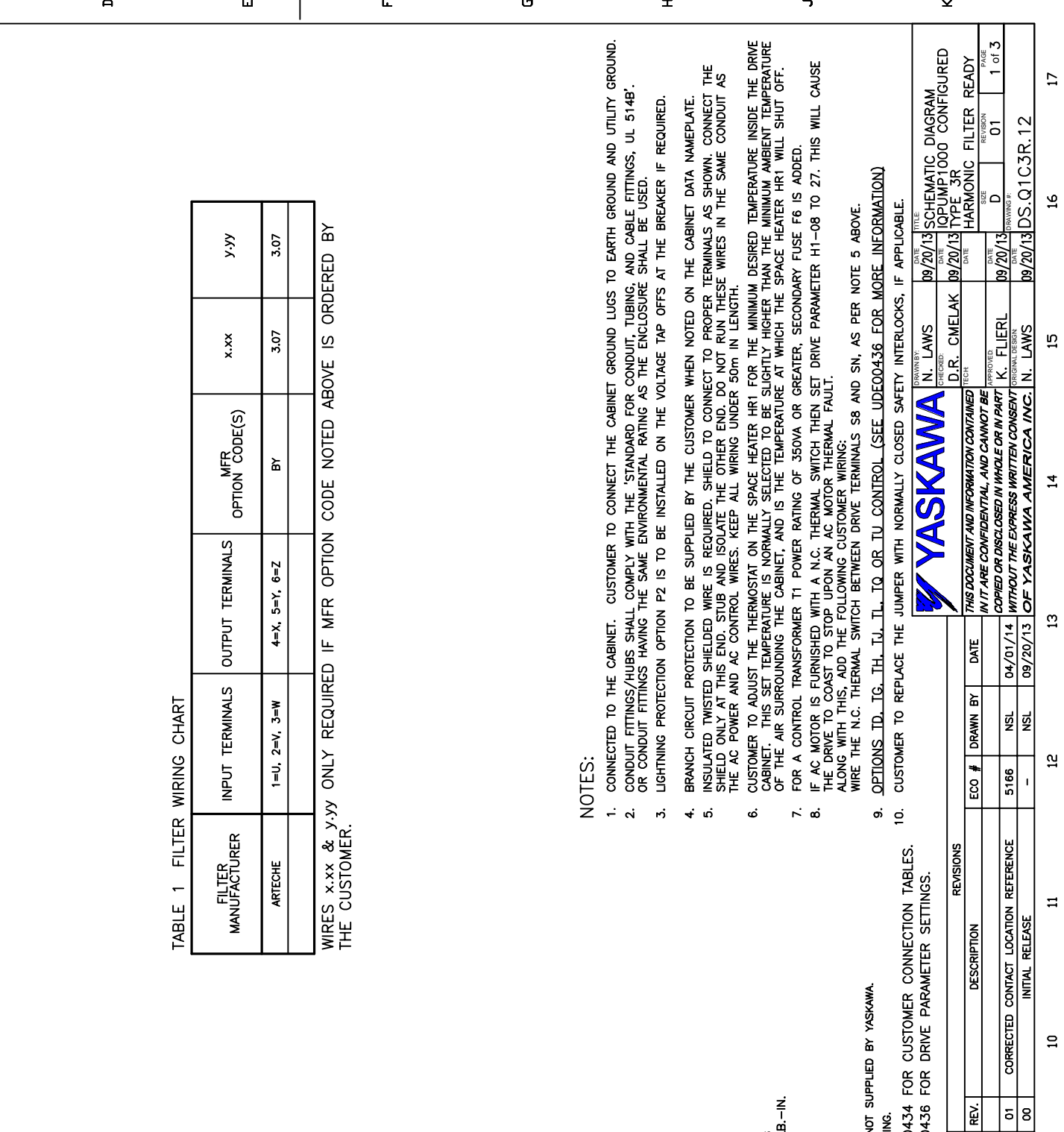
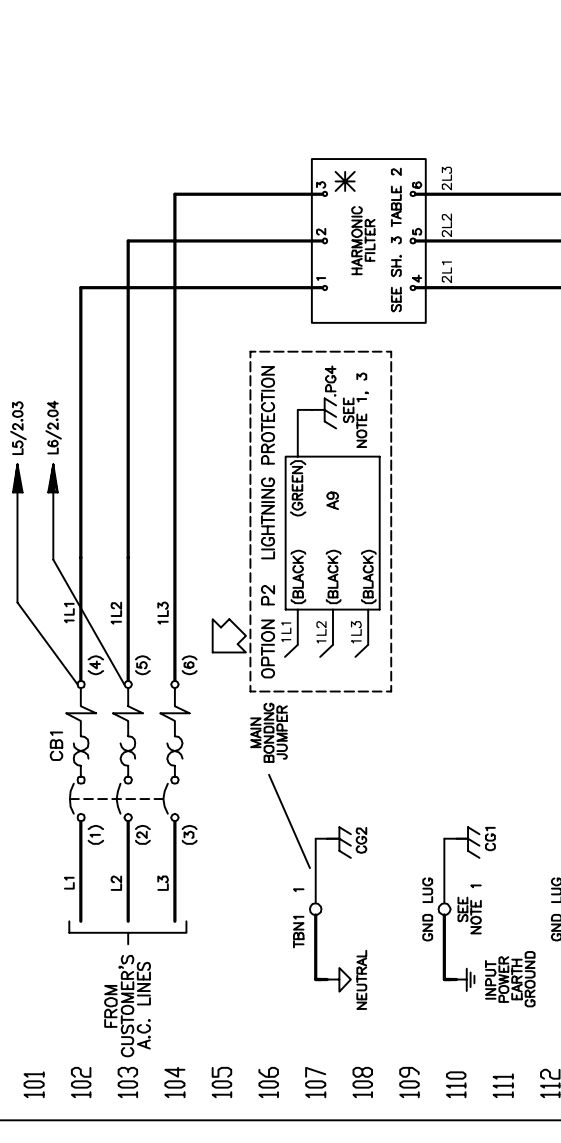


TABLE 1 FILTER WIRING CHART

FILTER MANUFACTURER	INPUT TERMINALS	OUTPUT TERMINALS	MFR OPTION CODE(S)	x.xx	y.yy
ARTECHE	1=U, 2=V, 3=W	4=X, 5=Y, 6=Z	BY	3.07	3.07

WIRES x.xx & y.yy ONLY REQUIRED IF MFR OPTION CODE NOTED ABOVE IS ORDERED BY THE CUSTOMER.

NOTES:

- CONNECTED TO THE CABINET. CUSTOMER TO CONNECT THE CABINET GROUND LUGS TO EARTH GROUND AND UTILITY GROUND.
- CONDUIT FITTINGS/HUBS SHALL COMPLY WITH THE STANDARD FOR CONDUIT, TUBING, AND CABLE FITTINGS, UL 514B. OR CONDUIT FITTINGS HAVING THE SAME ENVIRONMENTAL RATING AS THE ENCLOSURE SHALL BE USED.
- LIGHTNING PROTECTION OPTION P2 IS TO BE INSTALLED ON THE VOLTAGE TAP OFFS AT THE BREAKER IF REQUIRED.
- BRANCH CIRCUIT PROTECTION TO BE SUPPLIED BY THE CUSTOMER WHEN NOTED ON THE CABINET DATA NAMEPLATE.
- INSULATED TWISTED SHIELDED WIRE IS REQUIRED. SHIELD TO CONNECT TO PROPER TERMINALS AS SHOWN. CONNECT THE SHIELD ONLY AT THIS END. STUB AND ISOLATE THE OTHER END. DO NOT RUN THESE WIRES IN THE SAME CONDUIT AS THE AC POWER AND AC CONTROL WIRES. KEEP ALL WIRING UNDER 50m IN LENGTH.
- CUSTOMER TO ADJUST THE THERMOSTAT ON THE SPACE HEATER HR1 FOR THE MINIMUM DESIRED TEMPERATURE INSIDE THE DRIVE CABINET. THIS SET TEMPERATURE IS NORMALLY SELECTED TO BE SLIGHTLY HIGHER THAN THE MINIMUM AMBIENT TEMPERATURE OF THE AIR SURROUNDING THE CABINET, AND IS THE TEMPERATURE AT WHICH THE SPACE HEATER HR1 WILL SHUT OFF.
- FOR A CONTROL TRANSFORMER T1 POWER RATING OF 350VA OR GREATER, SECONDARY FUSE F6 IS ADDED.
- IF AC MOTOR IS FURNISHED WITH A N.C. THERMAL SWITCH THEN SET DRIVE PARAMETER H1-08 TO 27. THIS WILL CAUSE THE DRIVE TO COAST TO STOP UPON AN AC MOTOR THERMAL FAULT.
- ALONG WITH THIS, ADD THE FOLLOWING CUSTOMER WIRING:  
WIRE THE N.C. THERMAL SWITCH BETWEEN DRIVE TERMINALS S8 AND SN, AS PER NOTE 5 ABOVE.
- OPTIONS TD, IG, TH, TJ, TL, TO OR TV CONTROL (SEE UDE00436 FOR MORE INFORMATION)
- CUSTOMER TO REPLACE THE JUMPER WITH NORMALLY CLOSED SAFETY INTERLOCKS, IF APPLICABLE.

SEE DRAWING UDE00434 FOR CUSTOMER CONNECTION TABLES.  
SEE DRAWING UDE00436 FOR DRIVE PARAMETER SETTINGS.

\* -- INDICATES COMPONENTS NOT SUPPLIED BY YASKAWA.  
--- INDICATES CUSTOMER WIRING.

DRIVE CONTROL BOARD  
TERMINALS M3, M4  
WIRING SPECIFICATIONS  
WIRE RANGE: (26 - 16) AWG  
TIGHTENING TORQUE: (4.2 - 5.3) LB.-IN.



THIS DOCUMENT AND INFORMATION CONTAINED HEREIN ARE CONFIDENTIAL AND CANNOT BE COPIED OR DISCLOSED IN WHOLE OR IN PART WITHOUT THE EXPRESS WRITTEN CONSENT OF YASKAWA AMERICA, INC.

REV.	DESCRIPTION	ECO #	DRAWN BY	DATE
01	CORRECTED CONTACT LOCATION REFERENCE	5166	NSL	04/01/14
00	INITIAL RELEASE	-	NSL	09/20/13

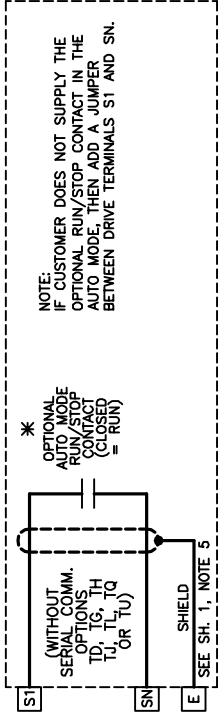
  

REV.	DESCRIPTION	ECO #	DRAWN BY	DATE
01	CORRECTED CONTACT LOCATION REFERENCE	5166	NSL	04/01/14
00	INITIAL RELEASE	-	NSL	09/20/13

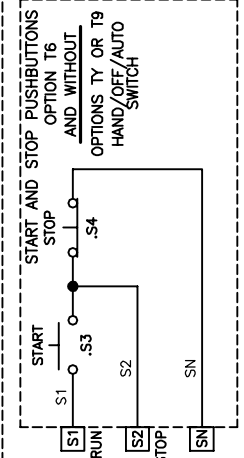
  

REV.	DESCRIPTION	ECO #	DRAWN BY	DATE
01	CORRECTED CONTACT LOCATION REFERENCE	5166	NSL	04/01/14
00	INITIAL RELEASE	-	NSL	09/20/13

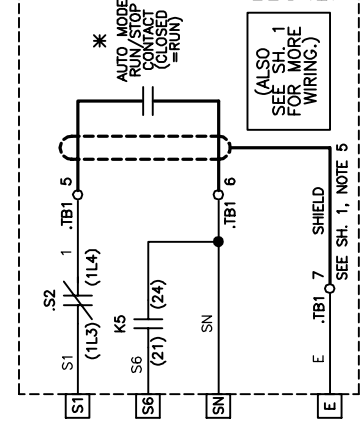
RUN/STOP CONTROL (FROM SHEET 1)



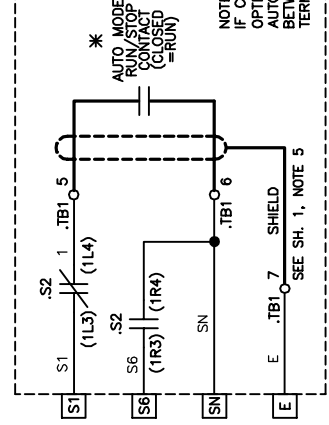
OR



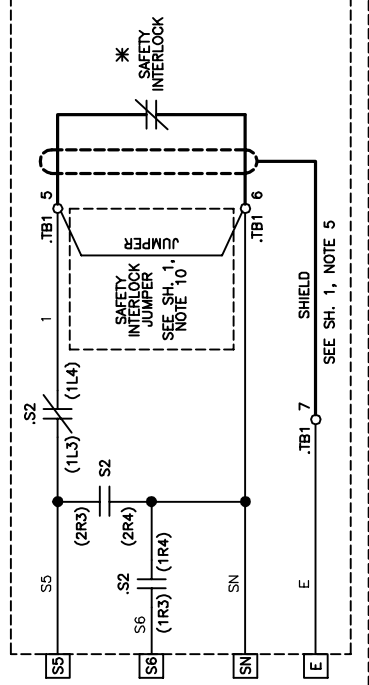
OR



OR



OR



CONTROL TRANSFORMER PRIMARY CONNECTIONS	INPUT VOLTS	TERMINALS	JUMPER LOCATION
A	208	(H1)	(H2)
		(H1)	(H4)
B	230/240	(H1)	(H1) TO (H3)
		(H1)	(H2) TO (H4)
C	480/480	(H1)	(H2) TO (H3)
		(H1)	(H2) TO (H5)
D	600	(H1)	(H2)
		(H1)	(H2)

START RELAY WITH FB AND H/O/A	HI-#	LO-#
(H1)	111	218
(H2)	111	218

RUN RELAY	HI-#	LO-#
(H1)	116	118
(H2)	116	118

OPTION P3 SPACE HEATER	HI-#	LO-#
(H1)	115	126
(H2)	115	126

SEE SHEET 1 FOR NOTES.



THIS DOCUMENT AND INFORMATION CONTAINED IN IT ARE CONFIDENTIAL AND CANNOT BE COPIED OR DISCLOSED IN WHOLE OR IN PART WITHOUT THE EXPRESS WRITTEN CONSENT OF YASKAWA AMERICA, INC.

DATE	REVISION	BY	CHKD	APP'D	DESCRIPTION
09/20/13	01	N. LAWS	D.R. CMELAK	K. FLIERL	SCHEMATIC DIAGRAM
09/20/13	01	N. LAWS	D.R. CMELAK	K. FLIERL	IQPUMP1000 CONFIGURED
09/20/13	01	N. LAWS	D.R. CMELAK	K. FLIERL	TYPE 3R
09/20/13	01	N. LAWS	D.R. CMELAK	K. FLIERL	HARMONIC FILTER READY
09/20/13	01	N. LAWS	D.R. CMELAK	K. FLIERL	2 OF 3

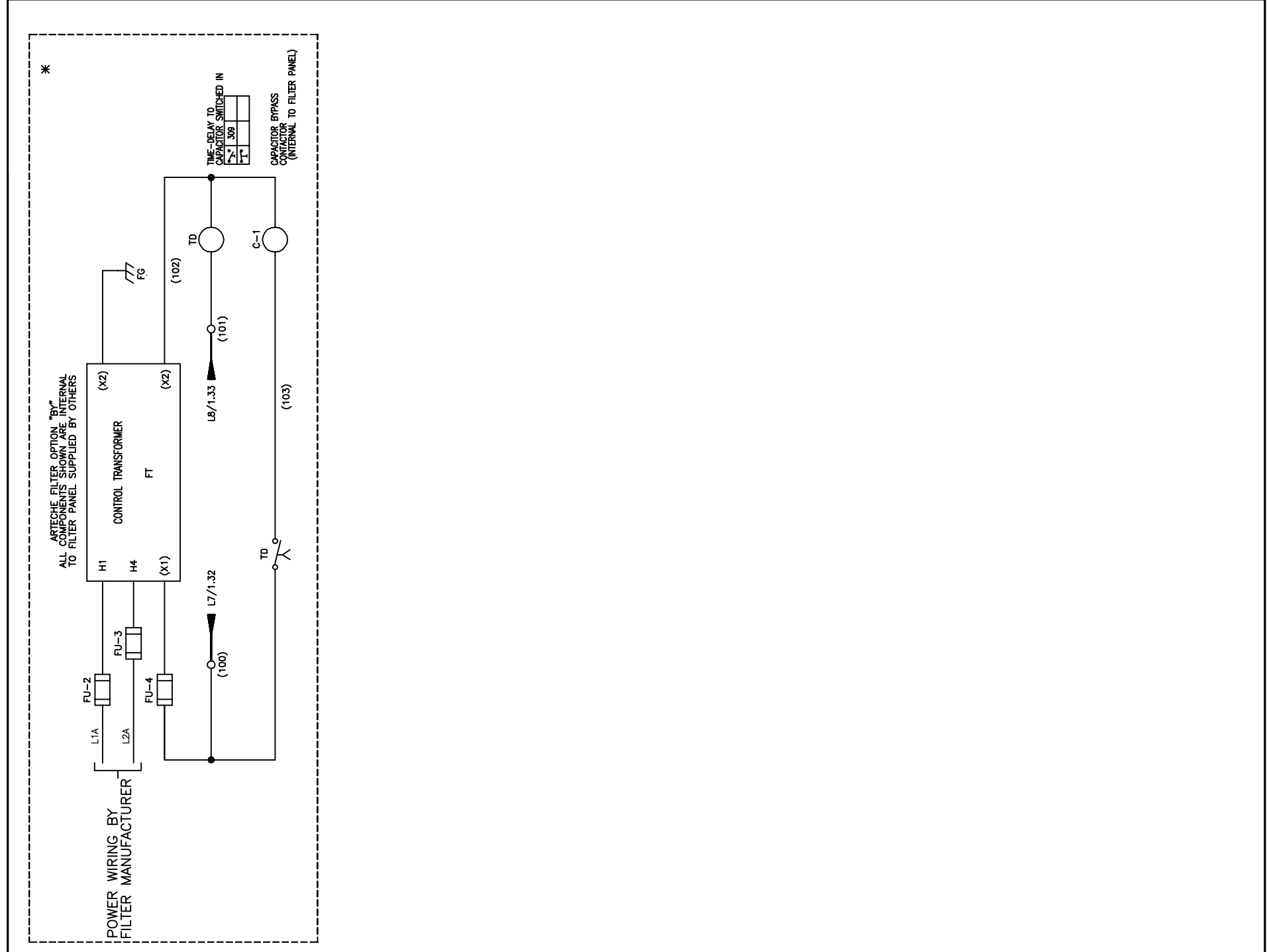


TABLE 2 ARTECHE FILTER SELECTION TABLE

BASE IQPUMP 1000 MODEL NO.	CIMR-PW440	CURRENT	ARTECHE LPF SERIES HARMONIC FILTER
Q1C3B052	058	52	LPF 0081 480 K_ *** 65KASCCR LG ##
Q1C3B065	072	65	LPF 0071 480 K_ *** 65KASCCR LG ##
Q1C3B077	088	77	LPF 0084 480 K_ *** 65KASCCR LG ##
Q1C3B096	103	96	LPF 0102 480 K_ *** 65KASCCR LG ##
Q1C3B124	139	124	LPF 0138 480 K_ *** 65KASCCR LG ##
Q1C3B156	165	156	LPF 0175 480 K_ *** 65KASCCR LG ##
Q1C3B180	208	180	LPF 0210 480 K_ *** 65KASCCR LG ##
Q1C3B240	250	240	LPF 0286 480 K_ *** 65KASCCR LG ##
Q1C3B302	362	302	LPF 0334 480 K_ *** 65KASCCR LG ##
Q1C3B361	362	361	LPF 0406 480 K_ *** 65KASCCR LG ##

WHERE \*\*\* = N1, N3R, or OPN; WHERE ## = BY or is blank; or \_ = B or S

SEE SHEET 1 FOR NOTES.



DRAWN BY N. LAWS	DATE 09/20/13	TITLE SCHEMATIC DIAGRAM
CHECKED D.R. CMELAK	DATE 09/20/13	TYPE IQPUMP1000 CONFIGURED
TECH	DATE	SIZE HARMONIC FILTER READY
APPROVED BY K. FLIERL	DATE 09/20/13	REVISION D 01
ORIGINAL DESIGNED BY N. LAWS	DATE 09/20/13	PAGE 3 of 3

THIS PAGE FOR CUSTOMER USE ONLY